

UNIVERSAL VIDEO RECORDER

QUICK START GUIDE

V1.0.0

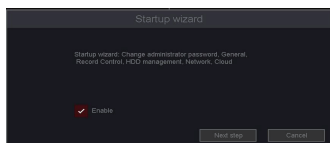
[NOTE] This picture is for reference only, subject to the real thing.

3. STARUP WIZARD

Startup Wizard

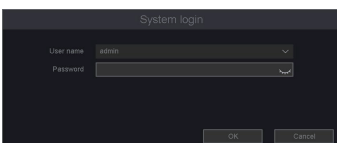
After power on or restarting the device, a startup wizard window will appear. The startup wizard guides the user through the initial set up.

1. Use the checkbox to set whether to open the startup wizard on future launches.
2. Click **Next Step**.



System Login

1. The default user name: admin.
2. The password: (null).
3. Click **OK**.



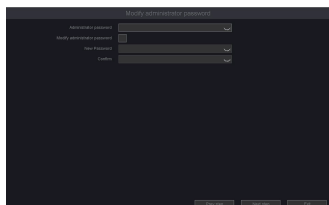
4. STARUP WIZARD: CHANGE PASSWORD

We recommend that you reset your password on a weekly or monthly basis, or you can click Next step to skip.

Password reset steps:

1. Enter the current password.
2. Enable **Modify administrator password**.
3. Enter a new password.
4. Confirm the new password.

[NOTE] If you change your admin password at this step, you will need to update your connection details in the App.



5. START UP WIZARD: GENERAL SETTING

You can configure the Language, Time zone, System time, Time format, DST, Auto logout, Startup Wizard, and Smart display etc.

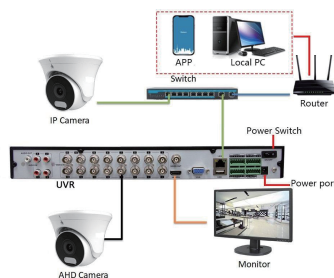
1. Select your desired language.
2. Select your time zone.
3. Choose any additional parameters as you need.
4. Click **Next Step**.

[NOTE] Certain models of devices will reboot after changing the language, other parameters are recommended to be defaulted.

WHAT'S IN THE BOX

| | |
|---------------------|------------------------|
| UVR | USB Mouse |
| HDD Mounting Screws | Quick Start Guide |
| HDD Power Cable | Hard Disk Serial Cable |
| Power Adapter | |

1. NETWORK TOPOLOGY



UVR are designed as out-of-the-box computer system that can record and store video footage on hard drives, mass storage devices, or cloud storage and have been optimized to improve the installation experience.

Connect the AHD cameras to the BNC ports of the UVR, display the video and starts recording after the configuration wizard is complete. Use the following instruction to set up the system. You can download the user manual by scanning the QR code within the guide for further information.

[NOTE] This may not be applicable to all installation environments.

2. HDD INSTALLATION

1 or 2 HDD(s) Series

This series products support 1 or 2 HDD(s). Please turn off the power and then start the installation of HDD. The pictures of the installation are only for reference.

Steps:

1.Side to open the cover.



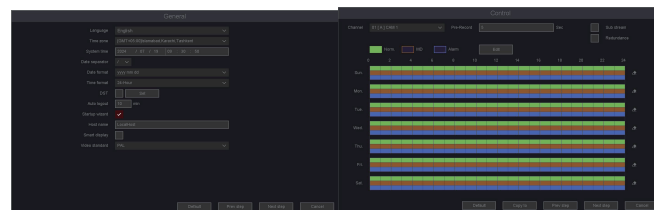
3.Connect the power and data cables.

2. Install the HDD and tight the screws.



4.Install the cover and screws.

1



6. START UP WIZARD: RECORD SETTING

By default, all channels are set to record all types. It is possible to set 6 periods for the record profile.

1. Select a channel, define the Pre-Record time and the stream (main/sub) to record.
2. Select Norm (Normal), MD (Event alarm), or Alarm (External alarm) as the record type.
3. Click and drag on the timeline with the mouse to enable/disable recording and create a recording schedule
4. Use the Copy to button to apply these settings to other channels or repeat steps 1-3.

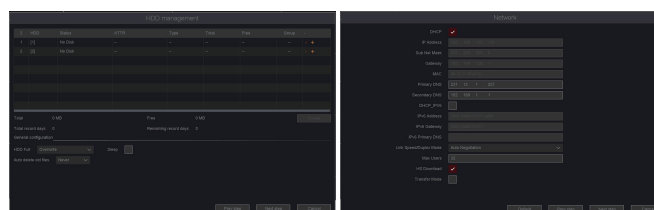
Depending on the device, sub-streams can also be recorded, the benefit of recording sub-streams of any channel is that high-resolution cameras can improve playback performance and capabilities. If your device supports this, check the box in the upper left corner of the window labeled Sub stream.

7. START UP WIZARD: HDD MANAGEMENT

Status is 'Normal' means that the NVR can normally record, if the hard disk is in a non-normal state, please check to avoid affecting the recording.

When hard disk status is normal, you can click 'Edit' to enter the 'Hdd set' pop-up window to edit the read/write mode and the group to which the hard disk belongs.

[NOTE] Please format the hard disk for the first time before using it.



8. START UP WIZARD: NETWORK SETTINGS

DHCP is enabled by default. Uncheck DHCP to apply a static IP address, making sure the network is configured with the correct settings for stable connection and remote access to IP cameras within the same range.

DNS can also be configured to obtain automatically or manually, and it's generally recommended to obtain automatically to ensure stable network connections.

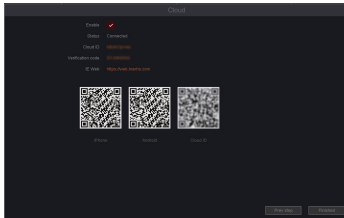
[NOTE] Click the field with the mouse to open the on-screen keyboard and enter numbers to set network settings.

9. START UP WIZARD: CLOUD

Cloud (P2P) settings: if the connection is successful, you can view the NVR preview on your smartphone:

1. Check the **Enable** box.
2. Wait for **Status** changes to **Connected** (if your network connection is normal).
3. Scan the QR code with your smartphone to download the App (iOS or Android).
4. Install and open the App and scan the QR code marked with "Cloud ID" in the startup wizard.
5. Click the play button of the added device in the App to view the real-time preview of the cameras.

[NOTE] For more detailed settings on App, please refer to the APP user manual. When previewing on the App, it is recommended to select the sub-stream over main stream to improve video display speed and reduce mobile data usage.



10. QUICK MENU

From the Live View, right-click the mouse or click the main menu in the lower left corner to access the seven grid menu.

- Quick Menu
- Main Menu – Access to all UVR function and settings.
 - Startup Wizard – launch the startup wizard.
 - Auto channel config – search and add all compatible IP cameras.
 - IP channel – configure connections to IP cameras.
 - Channel – channel status.
 - Record playback – Shortcut to playback functions.
 - Quick record – Quickly turn recording on and off.
 - PTZ Control – open PTZ controls.
 - Coaxial control – Changing the video output signal.
 - Color Setting – adjust camera color settings.
 - Output adjust – adjust display output.
 - Mute – turn off the sound
 - DISARM – One key to turn on or off the alarm
 - Check version – View version information
 - Logout – log out



11. CONNECTING CAMERA

Power on the AHD camera, connect it to the BNC ports of the UVR, the video will display automatically. It is also possible to connect the camera from the local network, by configuring the network IP camera to the same IP range as the UVR.

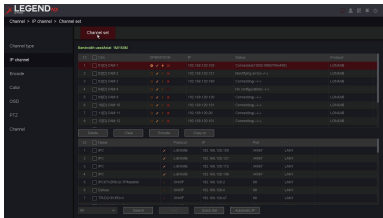
First, the HD channel needs to be changed to IP, follow these steps:

1. Click **IP Channel** in the Quick Menu, then click **Channel type - Channel set**.
2. Use the tick boxes to select channel to change to IP.
3. Click **Execute**, and the UVR will reboot to apply the changes.

Adding IP cameras from the network, follow these steps:

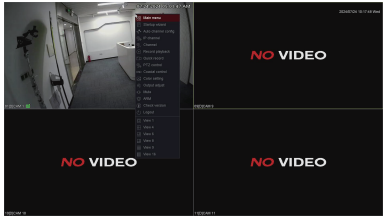
1. Ensure the UVR is properly configured to the local network.
2. Click **IP Channel** in the **Quick Menu**, then click IP Channel at the top of the screen.
3. Click the **Search** at bottom window to scan the network for compatible IP cameras.
4. Select the channel position from the top window.
5. Double click the desired IP address to add the selected channel position above.

[NOTE] If the camera does not load to the selected position after double-clicking, try deleting the connection information by clicking the red 'X', then double-clicking the IP address to add it here.



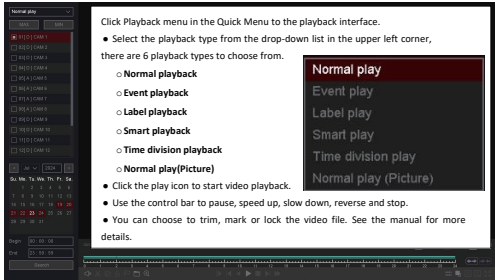
12. LIVE VIEW-CHANGING VIDEO OUTPUT SIGNAL

If your AHD camera is properly connected to the UVR, the screen will display the preview according to the channel you connected, as shown below.



- You can use the Coaxial Control of UVR to change the video output signal.
1. Select the camera you want to change the setting of the video output signal in the preview interface.
 2. Right click and select OSD Coaxial control.

13. PLAYBACK

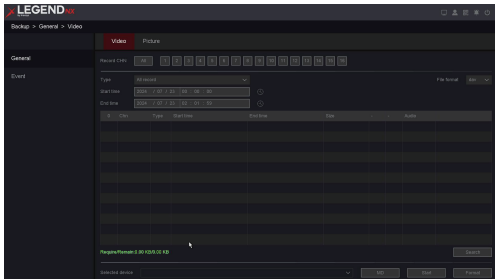


14. BACKUP

- Click Main menu in the Quick Menu, then click the Backup menu at the bottom, you can back up the videos, pictures, event videos and event pictures.
1. Select Record Channel, Type, Start time, and End time to search video files.
 2. Set the video File format before searching.
 3. Connect a USB device with enough free space.
 4. Select the video files you want to backup and click Start.

[NOTE] If the USB device is not displayed, click Detect.

[NOTE] If there isn't enough free memory on the USB device, click format to clear the USB device memory.



15. CAUTION



This symbol is intended to alert users of important operations and maintenance instructions within the documentation accompanying the product.



This symbol is intended to alert users of insulated 'dangerous voltage' within the product enclosure that may be strong enough to pose a risk of electric shock to untrained personnel.

| | | |
|---------|--|--|
| | CAUTION: RISK OF ELECTRIC SHOCK. DO NOT OPEN | |
| SHOCK | CAUTION: To reduce the risk of electric shock. Do not remove the cover or back. There are no user-serviceable parts inside. Refer products to suppliers. | |
| CAUTION | To prevent electric shocks and the risk of fire hazards, do not use specified power sources. | |



- CAUTIONS:
- Please note the UVR operating temperature and its environment requirements. Avoid using the UVR at too high or too low temperatures. The recommended operating temperature is -10~+50°C.
 - Do not mount the UVR near a radiator or heater sources.
 - The power supply must match the requirements of the UVR. Ensure the output voltage, current, voltage polarity and operating temperature are within the range required by the UVR power supply.
 - During a thunderstorm, please ensure an anti-thunder device is connected or disconnect the power supply to the camera.